

Overall Statistics for England and Wales as at 14 May 2004

Consultants

Total number of consultant posts	1,542	(2003 – 1,499)
Number of consultants in post (Number of WTEs – 1,303.) (including locums and part-time consultants)	1,466	(2003 – 1,439)
Male	1063	(2003 – 1,069)
Female	403	(2003 – 370)
Number of consultant vacancies	76	(2003 – 60)
Number of posts filled by locums	75	(2003 – 79)
Number of community gynaecologists	15	(2003 – 12)

PART-TIME CONSULTANTS (up to 9 sessions)

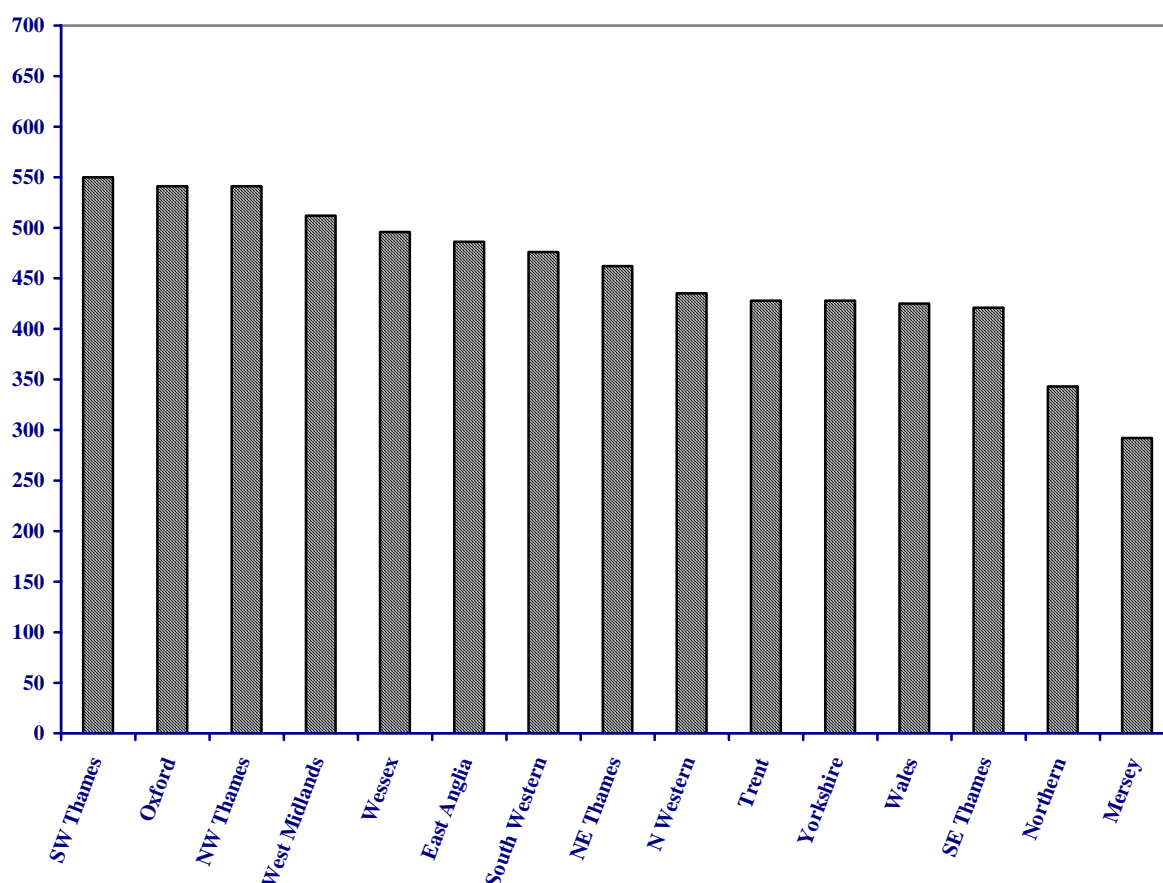
Total number	102	(2003 – 101)
Male	56	(2003 – 49)
Female	46	(2003 – 52)

DEANERY DISTRIBUTION OF CONSULTANTS IN POST

(excluding community gynaecologists)

Deanery	No in Post	No of Deliveries Per Consultant	No of Deliveries Per NHS WTE
East Anglia	70	459	486
Mersey	70	392	292
North Thames (East)	146	417	462
North Thames (West)	94	466	541
North Western	121	393	435
Northern	94	318	343
Oxford	69	505	541
South Thames (East)	124	383	421
South Thames (West)	83	482	550
South Western	82	430	476
Trent	135	390	428
Wessex	72	456	496
West Midlands	139	482	512
Yorkshire	93	433	428
Wales	74	390	425

Number of Deliveries per NHS WTE



Overall number of deliveries	620,924	(2003 – 676.116)
(of which 7,223 are domiciliary (1.16%))		
Average number of deliveries per consultant	423	(2003 – 464)
Average number of deliveries per WTE	476	(2003 – 502)

SIZE OF HOSPITAL (NO OF CONSULTANTS) WITH NUMBER OF DELIVERIES

Number of Deliveries	No of Units	Number of Consultants														
		2	3	4	5	6	7	8	9	10	11	12	13	14	15	16
<500	4	2	1	1												
501 - 1000	3		3	0												
1001 - 1500	19	1	4	11	2					1						
1501 - 2002	27		1	11	12	2		1								
2001 - 2500	27			6	8	9	2	2								
2501 - 3000	31			5	7	9	4	1	1	1	1	1				1
3001 - 3500	34					8	15	6	1	2		1	1			
3501 - 4000	19					5	3	3	3		2	2				

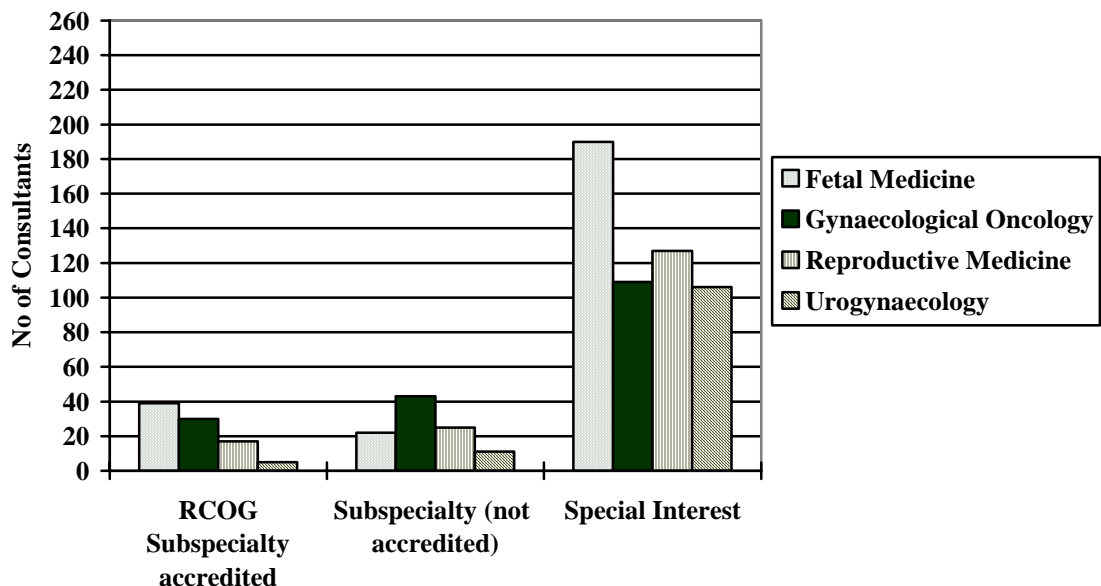
4001 - 4500	14			2	1	1	3	1	1	2		1		1
4501 - 5000	14		1	1		3	2	1	1	2				3
5001 - 5500	7		2			1	2					1		
> 5501	8					1				1				1

SUBSPECIALTY/SPECIAL INTERESTS

	Fetal Medicine 0	Gynaecological Oncology	Reproductive Medicine	Urogynaecology
Consultants practising	251	182	169	122
Subspecialty accredited	39	30	17	5
Subspecialty (not accredited)	22	43	25	11
Special interest	190	109	127	106
Total sessions	697	739	492	282

TYPE OF PRACTICE

Number of consultants practising obstetrics and gynaecology	1,209,
Number of consultants practising obstetrics	110
Number of consultants practising gynaecology	147



CONSULTANT RETIREMENTS

(including deaths)

Total number	18	(2003 – 29)
Average age of retirement	61	(2003 – 61)

Specialist Registrars

Total number of specialist registrar posts

868

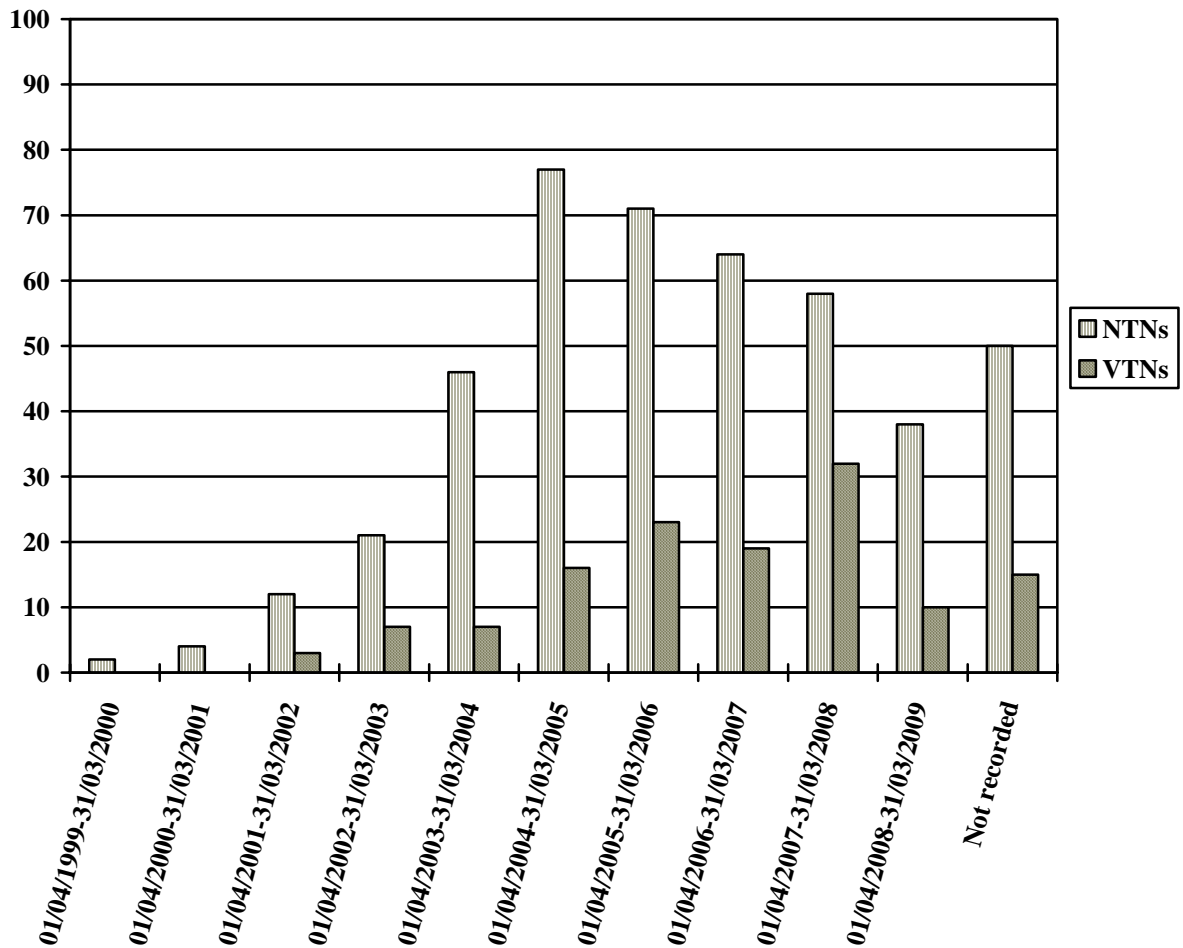
(2003 – 842)

Number of specialist registrars in post	849	(2003 – 812)
Number of specialist registrar vacancies	19	(2003 – 30)
Number of career specialist registrars	443	(2003 – 451)
Number of visiting specialist registrars	406	(2003 – 361)
Type 1 trainees (VTN)	132	(2003 – 59)
Type 2 trainees (FTTA)	274	(2003– 302)
Number of flexible specialist registrars	40	(2003 – 45)
Number of career SpRs without a recorded NTN (of whom 7 are engaged in research)	45	(2003 – 43)
<u>UK trainees (47%)</u>	403	(2003 – 268)
Male	169	(2003 – 183)
Female	234	(2003 – 230)
UK trainees intending to take up a UK consultant post	260	(2003 – 387)
<u>EU trainees (5%)</u>	40	(2003 – 38)
Male	25	(2003– 27)
Female	15	(2003 – 28)
EU trainees intending to take up a UK consultant post	27	(2003 – 33)
<u>Visiting trainees (48%)</u>	406	(2003 – 341)
Male	160	(2003 – 155)
Female	201	(2003 – 186)
Visiting trainees intending to take up a UK consultant post	238	(2003 – 82)

DEANERY DISTRIBUTION OF SPECIALIST REGISTRARS IN POST

Deanery	Total		NHS	Academic/Research
	No	% of National		
East Anglia	28	3.30	26	2
Mersey	42	4.95	39	3
North Thames (East)	91	10.72	84	6
North Thames (West)	61	7.18	58	3
North Western	61	7.18	60	1
Northern	62	7.30	62	0
Oxford	41	4.83	36	5
South Thames (East)	58	6.83	56	2
South Thames (West)	53	6.24	42	11
South Western	31	3.65	29	2
Trent	83	9.78	75	8
Wessex	51	6.01	50	1
West Midlands	92	10.84	88	3
Yorkshire	55	6.48	52	3
Wales	40	4.71	40	0
Totals	849		797	50

SPR CCST DATES



CCST Date	No of SpRs (NTN)	No of SpRs (VTN)	Total
01/04/1999 – 31/03/2000	2		2
01/04/2000 – 31/03/2001	4		4
01/04/2001 – 31/03/2002	12	3	15
01/04/2002 – 31/03/2003	21	7	28
01/04/2003 – 31/03/2004	46	7	53
01/04/2004 – 31/03/2005	77	16	93
01/04/2005 – 31/03/2006	71	23	94
01/04/2006 – 31/03/2007	64	19	83
01/04/2007 – 31/03/2008	58	32	90
01/04/2008 – 31/03/2009	38	10	48
Not recorded	50	15	65

SpR Year	No of SpRs (NTN)	No of SpRs (VTN)	Total
Year 1	89	16	105
Year 2	51	26	77
Year 3	79	22	101
Year 4	82	26	108
Year 5	62	17	79
Over Year 5	14	1	15
Not stated	66	24	90

Trainees in LAS and LAT Posts

Total number of O&G specialty trainees in LAS posts	61	(2003– 64)
Career	25	
Visiting	36	
Total number of O&G specialty trainees in LAT posts	72	(2003 – 92)
Career	18	
Visiting	54	

Senior House Officers

Total number of SHO posts (includes GPVTs)	1,489	(2003 – 1,487)
Number of SHOs in post	1,473	(2003 – 1,475)
Number of SHO vacancies	16	(2003 – 10)

SENIOR HOUSE OFFICERS TRAINING FOR A CAREER IN OBSTETRICS AND GYNAECOLOGY

Number of O&G specialty trainees in post	753	(2003 – 690)
Number of O&G specialty trainees regularly acting up	75	(2003 – 119)
Number of career O&G specialty trainees	267	(2003 – 273)
Number of visiting O&G specialty trainees	487	(2003 – 417)

<u>UK trainees (15%)</u>	221	(2003 – 217)
Male	51	(2003 – 54)
Female	170	(2003 – 163)
UK trainees intending to take up a UK consultant post	216	(2003 – 170)

<u>EU trainees (3%)</u>	46	(2003 – 56)
Male	24	(2003 – 30)
Female	22	(2003 – 28)
EU trainees intending to take up a UK consultant post	20	(2003 – 25)

<u>Visiting trainees (33%)</u>	487	(2003 – 417)
Male	157	(2003 – 271)
Female	330	(2003 – 146)
Visiting trainees intending to take up a UK consultant post	193	(2003 – 146)

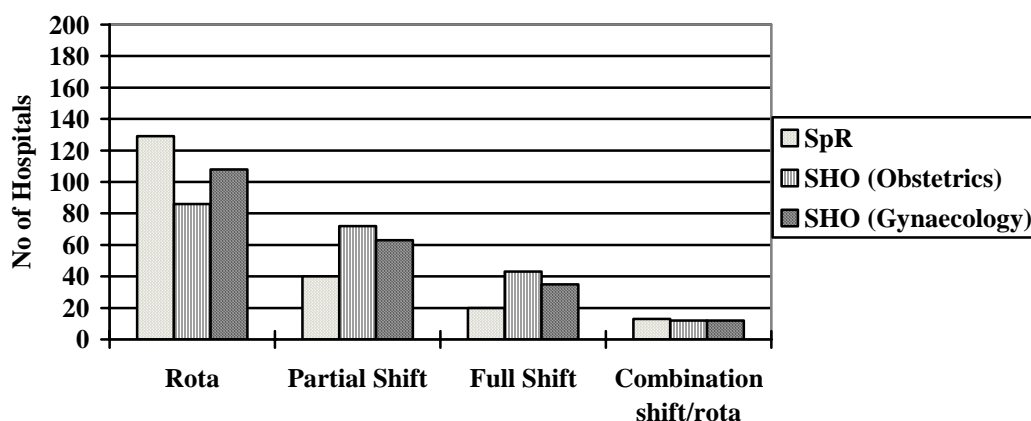
SENIOR HOUSE OFFICERS TRAINING FOR A CAREER IN GENERAL PRACTICE

Total number (49%)	721	(2003 – 863)
Structured	542	(2003 - 530)
Male	236	
Female	306	
Non-structured	174	(2003 – 196)
Male	62	
Female	112	
Other hospital specialty	5	(2003 – 3)
Male	4	
Female	1	

DEANERY DISTRIBUTION OF SHOs IN POST

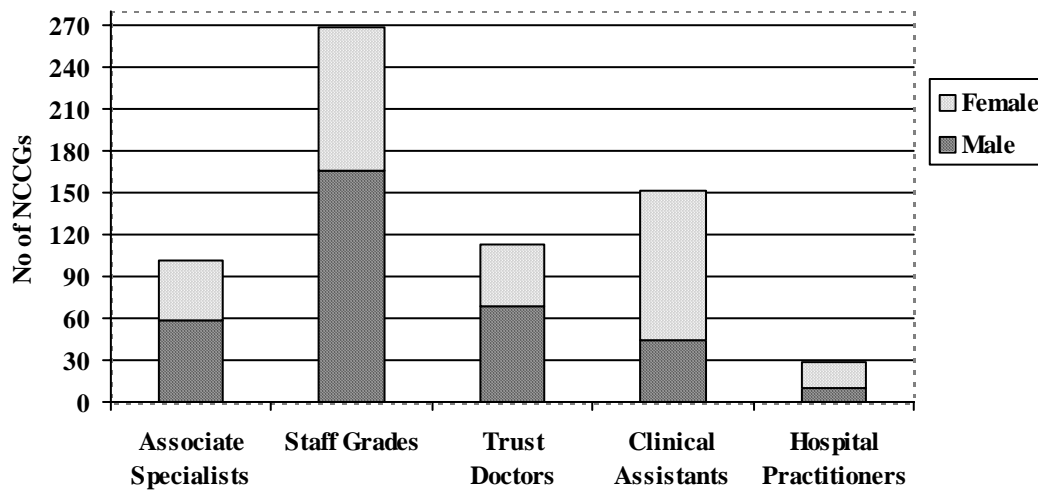
Deanery	Total No	Career		Visiting		GPVTs	
		No	%	No	%	No	%
East Anglia	59	12	20.34	22	37.29	25	42.37
Mersey	80	16	20.00	20	25.00	44	55.00
North Thames (East)	143	32	22.38	54	37.76	57	39.86
North Thames (West)	75	21	28.00	12	16.00	42	56.00
North Western	129	19	14.73	48	37.21	62	48.06
Northern	92	10	10.87	37	40.22	45	48.91
Oxford	58	8	13.79	15	25.86	35	60.34
South Thames (East)	114	22	19.30	39	34.21	53	46.49
South Thames (West)	84	14	16.67	14	16.67	56	66.67
South Western	88	19	21.59	18	20.45	52	59.09
Trent	143	29	20.28	52	36.36	62	43.36
Wessex	76	14	18.42	15	19.74	47	61.84
West Midlands	121	18	14.88	41	33.88	62	51.24
Yorkshire	118	20	16.95	56	47.46	42	35.59
Wales	93	13	13.98	43	46.24	37	39.78
Totals	1473	267		487		721	

On call Rotas



	Rota	Partial Shift	Full Shift	Combination of Shift/Rota
SpR	120	49	46	14
SHO (Obstetrics)	85	69	65	13
SHO (Gynaecology)	98	59	57	12

Other Staff



	Total	Male	Female
Associate Specialists/Locum Associate Specialists	101	59	42
Staff Grades/Locum Staff Grades	268	166	102
Trust Doctors	113	68	45
Clinical Assistants	51	45	106
Hospital Practitioners	29	10	19

DEANERY DISTRIBUTION OF NON CONSULTANT CAREER GRADES COMPARED TO CONSULTANTS (excluding community gynaecologists)

Deanery	No of Consultants	No of NCCGs	% NCCGs of all career grades	Ratio of NCCGs + SpRs to Consultants
East Anglia	70	22		
Mersey	70	28		
North Thames (East)	146	41		
North Thames (West)	94	29		
North Western	121	48		
Northern	94	19		
Oxford	69	44		
South Thames (East)	124	33		
South Thames (West)	83	35		
South Western	82	26		
Trent	135	25		
Wessex	72	24		
West Midlands	139	37		
Yorkshire	93	30		
Wales	74	36		